

# Alaska Department of Fish and Game

Habitat Section  
Southeast Region



**113-59-10040-2416**

**ADDITION**

**Water body name:**

**Quad:** Sitka C-4

**Upper Reach Latitude:** 57.542453 **Longitude:** -135.088714

**Lower Reach Latitude:** 57.541537 **Longitude:** -135.077241

**Survey date:** 8/7/2023

**Species & Lifstage:** COP

**Survey crew:** NJ, CD

**Findings:** We surveyed this cataloged stream using a backpack electrofisher and GPS and captured juvenile coho salmon and cutthroat trout. The stream parallels the road and consists of a mixture of boulders, cobble, and large gravel. The stream survey ended at waypoint 625 due to time limitations, but fish habitat likely continues upstream (Table 1; Figures 1–3).

**Recommendations:** Extend upper extent of Stream No. 113-59-10040-2416 in the anadromous waters catalog up to waypoint 625 and route correct the stream near the confluence of tributary 3 (Figures 4, 5).

**Nomination:** Pending

Table 1.—113-59-10040-2416 survey data.

Waypoint	Latitude	Longitude	Notes	Stream Width ft	Stream Substrate	Habitat Features	Gradient %	Sample Effort	Sample Results
625	57.542464	-135.088730	LWD scattered throughout channel.		Large Gravel Small Gravel	LWD	2-4	EF	2 CO 1 CT



Figure 1. Upstream at waypoint 625.

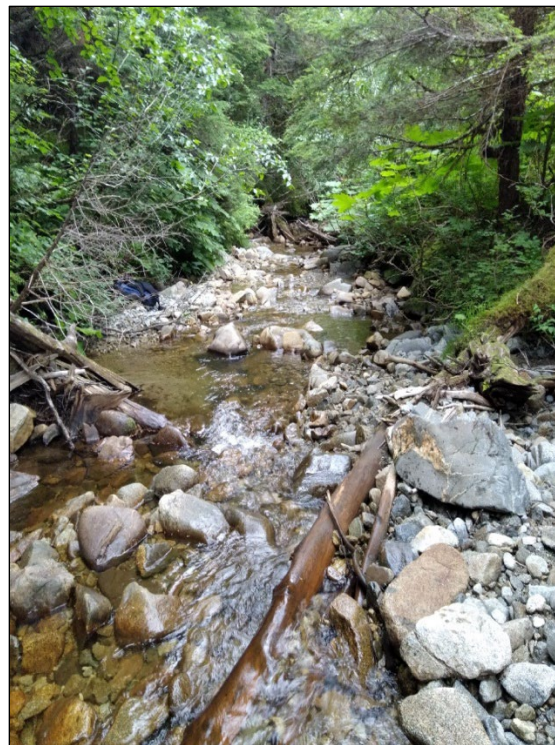


Figure 2. Downstream at waypoint 625.



Figure 3. Juvenile coho salmon caught at waypoint 625.



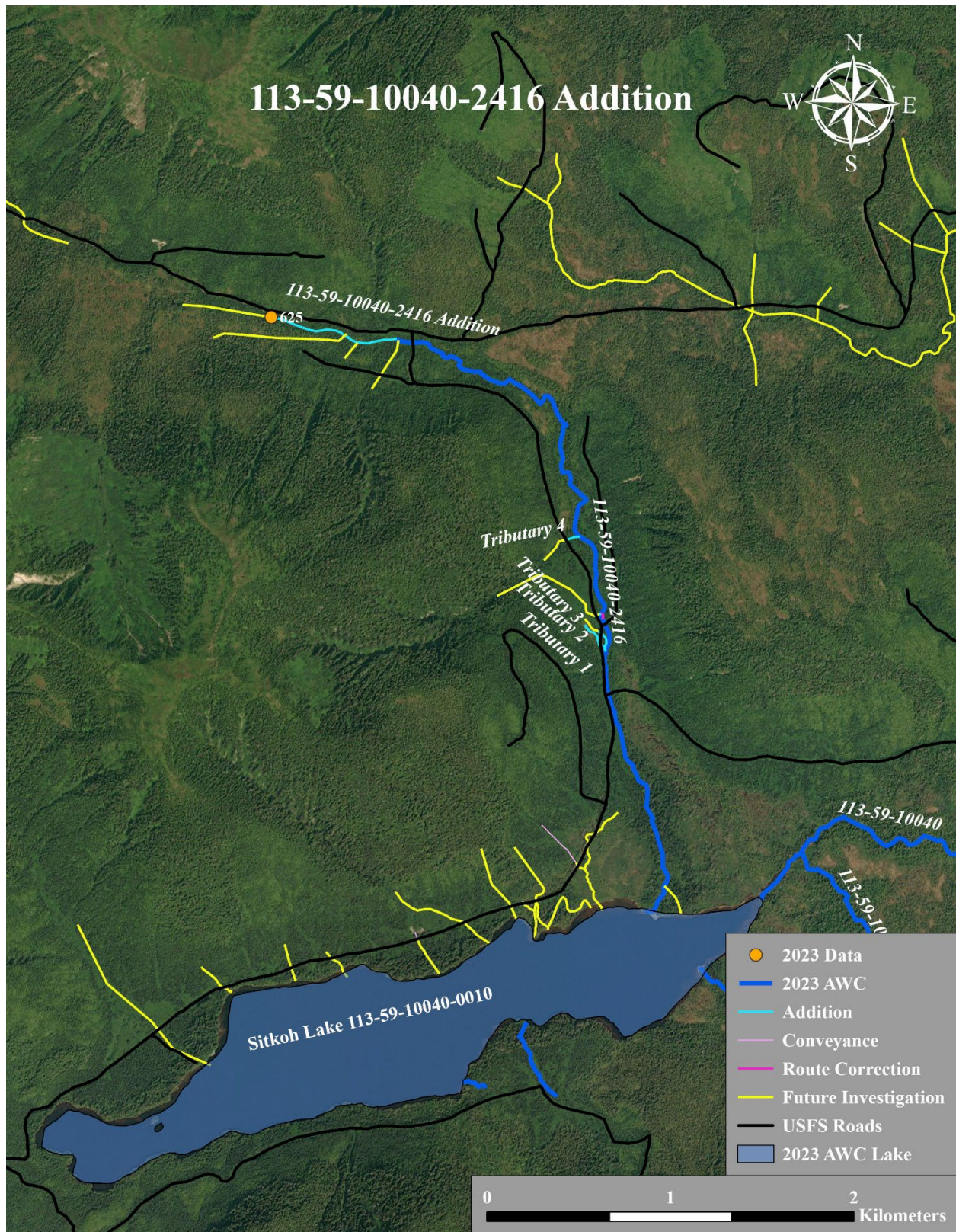


Figure 4. Stream No. 113-59-10040-2416 addition map.



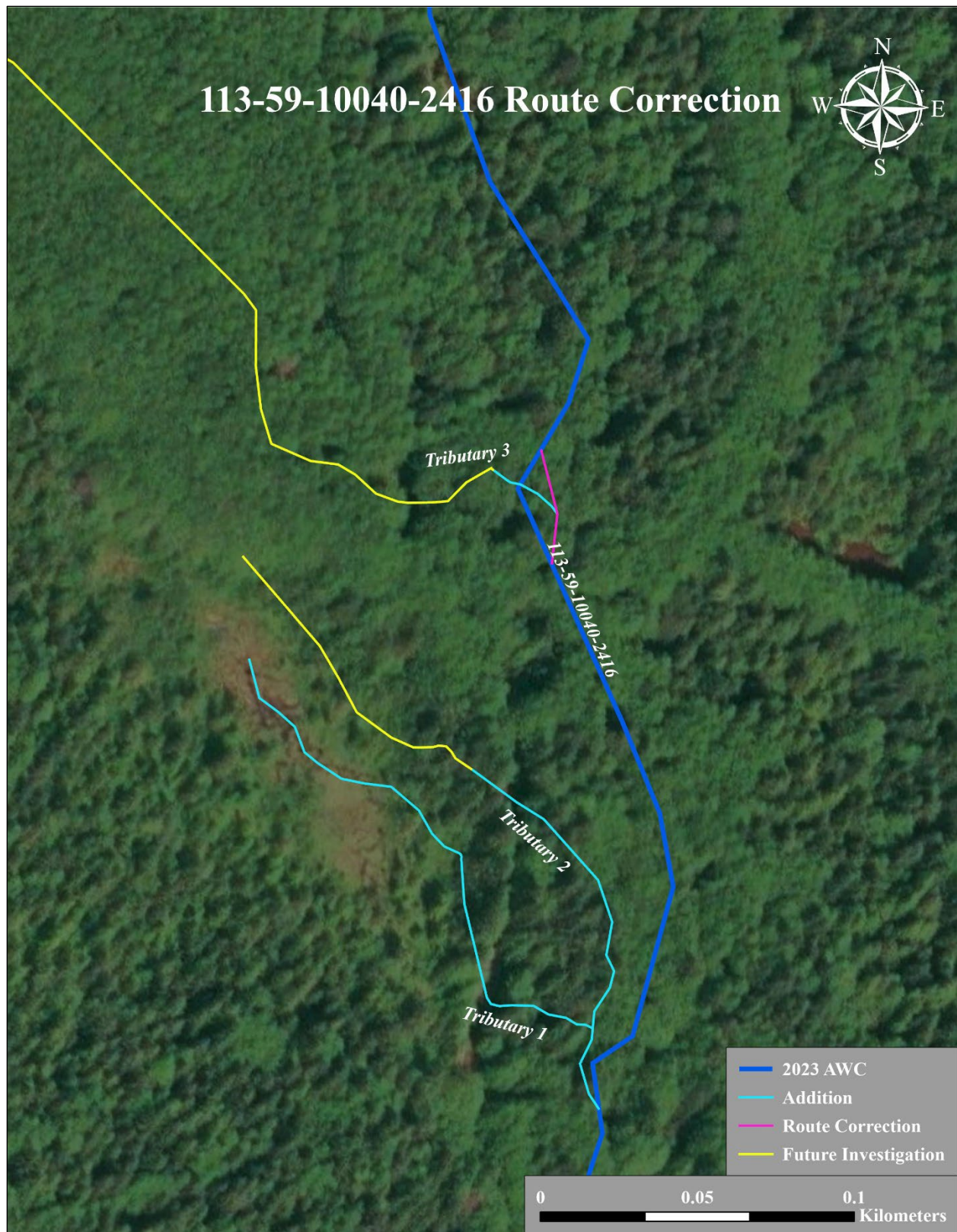


Figure 5. Stream No. 113-59-10040-2416 route correction map.